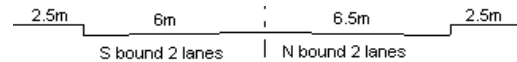


YEAR

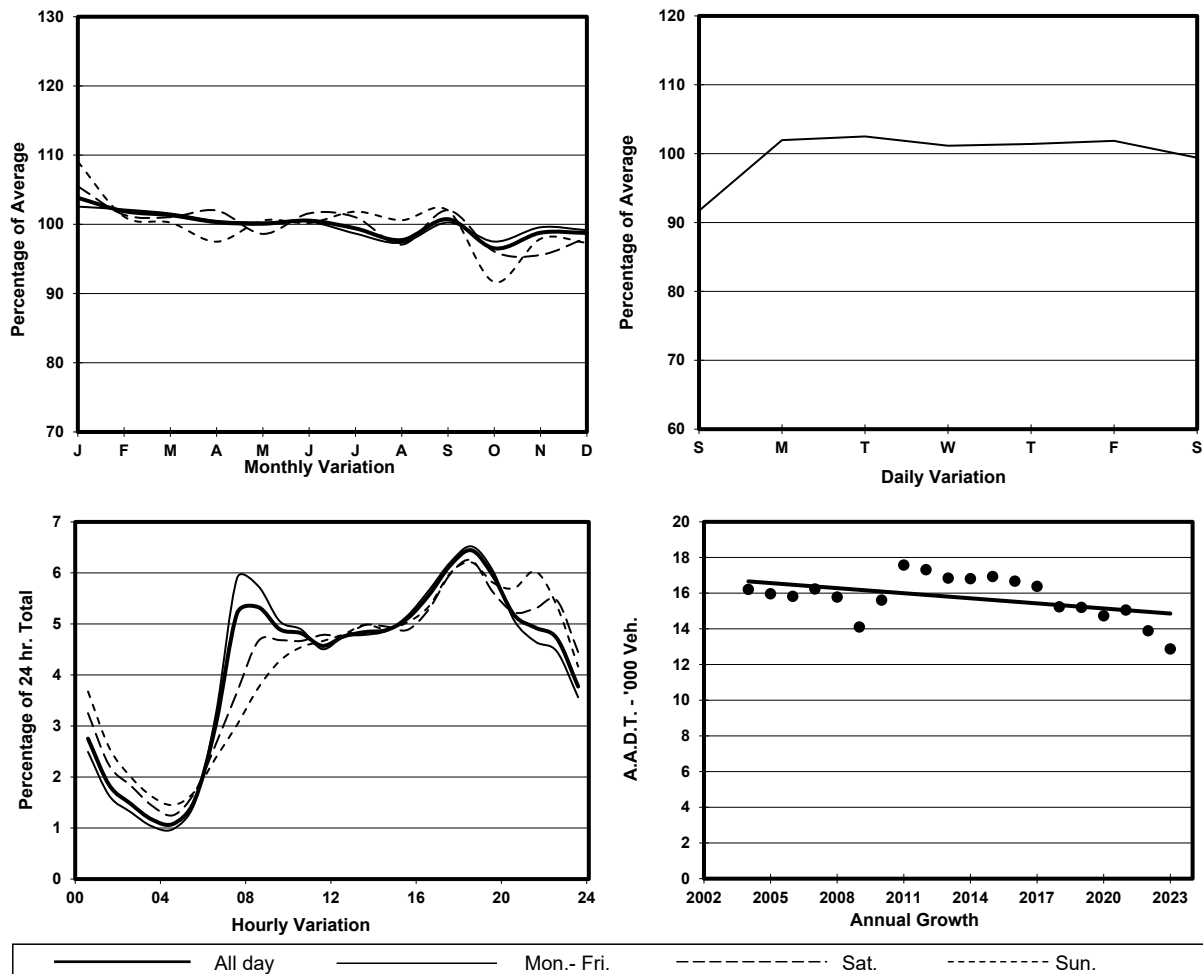
2023

LINK

HIU KWONG ST (from SAU MING RD to HIP WO ST)

CORE STATION  
ROAD NETWORK  
ROAD TYPE3018  
MAJOR  
DISTRICT DISTRIBUTOR

## 1. TRAFFIC FLOW VARIATION AND GROWTH



## 2. TRAFFIC CHARACTERISTICS (BY DIRECTION)

Parameter	All - Day	Mon. - Fri.	Sat.	Sun.
<b>SOUTH BOUND</b>				
A.A.D.T.	6310	6450	6300	5820
R 12 / 24 - %	62.1	63.4	59.8	57.7
R 16 / 24 - %	84.4	85.2	82.6	81.7
AM Peak Hour	0700-0800	0700-0800	0900-1000	0900-1000
One-way flow at AM peak hour	310	360	290	240
T - % (AM)	-	-	-	-
PM Peak Hour	1800-1900	1800-1900	1800-1900	1800-1900
One-way flow at PM peak hour	440	470	420	380
T - % (PM)	-	-	-	-
Prop.of commercial vehicles - 16 hr.	-	-	-	-
<b>NORTH BOUND</b>				
A.A.D.T.	6560	6710	6550	6050
R 12 / 24 - %	63	64.7	59.4	57.4
R 16 / 24 - %	82.3	83.4	79.8	79.1
AM Peak Hour	0800-0900	0800-0900	0800-0900	0900-1000
One-way flow at AM peak hour	380	430	320	270
T - % (AM)	-	-	-	-
PM Peak Hour	1700-1800	1700-1800	1700-1800	1800-1900
One-way flow at PM peak hour	390	410	380	360
T - % (PM)	-	-	-	-
Prop.of commercial vehicles - 16 hr.	-	-	-	-

## 3. OTHER INFORMATION AND COMMENT